

GENERAL NOTES:

1. ALL FASTENERS SHALL BE IN ACCORDANCE WITH THESE DRAWINGS. SPECIFIED ANCHOR EMBED TO BASE MATERIAL SHALL BE BEYOND WALL FINISH OR STUCCO.
 2. OPENINGS, BUCKING & BUCKING FASTENERS MUST BE PROPERLY DESIGNED & INSTALLED TO TRANSFER WIND LOADS TO THE STRUCTURE.
 3. THESE NON-IMPACT RATED PRODUCT INSTALLATIONS ARE IN ACCORDANCE WITH AND MEET THE REQUIREMENTS OF THE FLORIDA BUILDING CODE (FBC).
 4. ALL ANCHORS SECURING PRODUCT FRAMES TO PRESSURE TREATED BUCKS OR WOOD FRAMING SHALL BE CAPABLE OF RESISTING CORROSION CAUSED BY THE PRESSURE TREATING CHEMICALS IN THE WOOD.
 5. MATERIALS, INCLUDING BUT NOT LIMITED TO STEEL SCREWS, THAT COME INTO CONTACT WITH OTHER DISSIMILAR MATERIALS SHALL MEET THE REQUIREMENTS OF FLORIDA BUILDING CODE CHAPTER 20.
 6. TO THE BEST OF OUR KNOWLEDGE, THE PRODUCT SHOWN HEREIN IS CERTIFIED & QUALITY ASSURED BY A FLORIDA STATE APPROVED CERTIFICATION/QA ENTITY & SHALL BE LABELED IN ACCORDANCE WITH THE FBC AND THE FLORIDA DEPARTMENT OF BUSINESS & PROFESSIONAL REGULATION SPECIFICATIONS. PRODUCT ASSEMBLY IS NOT PART OF THIS DRAWING AND SHALL BE IN ACCORDANCE WITH THE MANUFACTURER'S QUALITY ASSURANCE SPECIFICATIONS & TESTING REPORTS.
 7. CERTIFICATION OF THESE PRODUCT INSTALLATIONS SHALL BE CONSIDERED VOID IF ANY OF THE FOLLOWING APPLY: 1) PRODUCT IS INSTALLED WITHOUT A BUILDING PERMIT FROM THE APPLICABLE LOCAL BUILDING DEPARTMENT. 2) PRODUCT IS INSTALLED BY ANYONE OTHER THAN A LICENSED CONTRACTOR EXPERIENCED WITH INSTALLATIONS OF THIS TYPE OF PRODUCT.
 - 3) IF CHANGES HAVE OCCURRED TO THE PRODUCT'S CERTIFICATION ENTITY'S CERTIFICATE THAT CAUSE THESE INSTALLATIONS TO BE INCORRECT OR INCONSISTENT WITH WHAT HAS BEEN TESTED.
 8. THE LEAST DESIGN PRESSURE SPECIFIED EITHER IN THIS DRAWING OR IN THE PRODUCTS CERTIFICATION SHALL CONTROL FOR THE INSTALLED PRODUCT.
 9. THESE DRAWINGS CERTIFY THE PRODUCT INSTALLATION ONLY. WATER PROOFING OF THE INSTALLED PRODUCT IS NOT PART OF THIS INSTALLATION CERTIFICATION. THAT RESPONSIBILITY SHALL BE THAT OF THE MANUFACTURER &/OR INSTALLER.
- INSTALLATION EVALUATION IS BASED ON APPLICABLE ANCHOR STANDARDS AND/OR INFORMATION & RESULTS FROM APPLICABLE TEST REPORTS. THE FLORIDA BUILDING CODE VERSION CONSIDERED WITH THE EVALUATION WAS THAT IN FORCE AT THE TIME OF THE EVALUATION. IN THE EVENT OF CODE VERSION CHANGES/UPDATES OR IN THE EVENT THAT NEW OR ADDITIONAL TESTING IS COMPLETED ON THE REFERENCED PRODUCT, PRIOR TO STATING CODE COMPLIANCE WITH THE STATE, THE MANUFACTURER SHALL CONFIRM WITH THE INSTALLATION EVALUATION ENGINEER OF RECORD THAT THE INSTALLATIONS SPECIFIED HERE-IN ARE CURRENT WITH THE THEN CURRENT TESTING, CODE AND APPLICABLE STANDARDS.

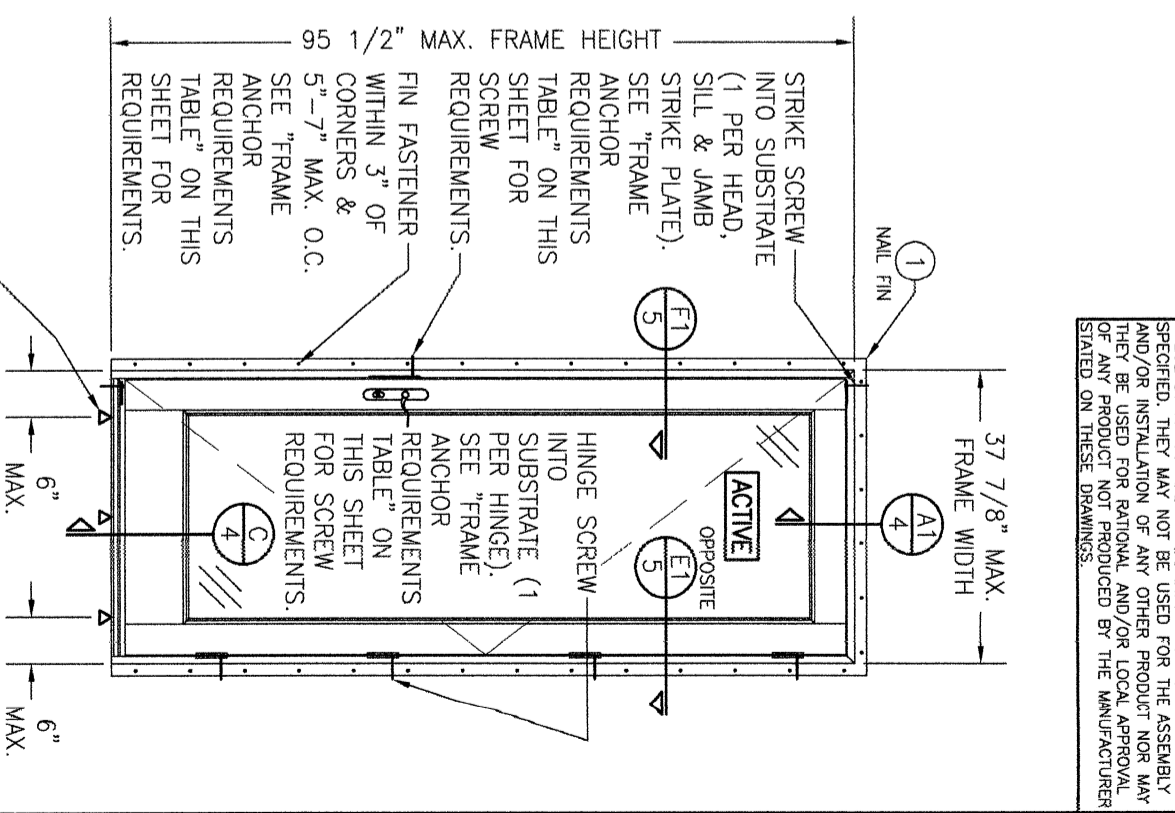
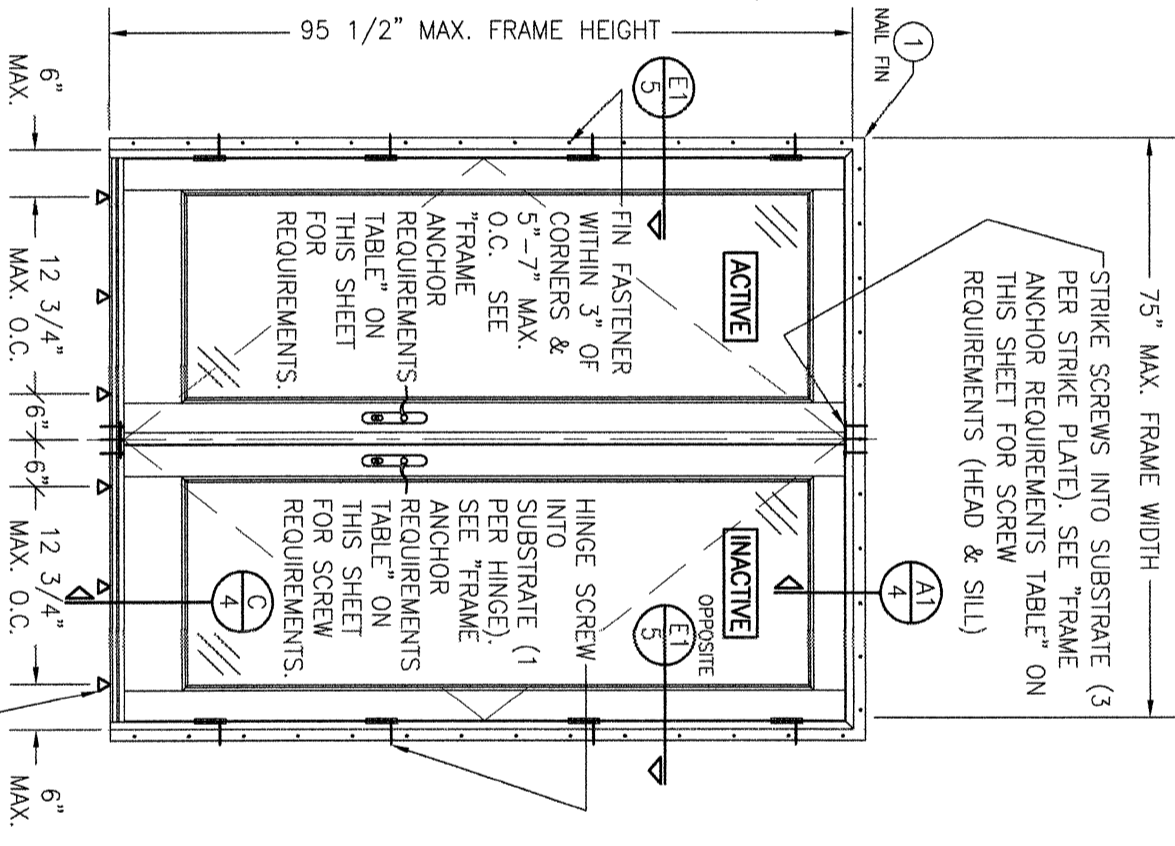
FRAME ANCHOR REQUIREMENTS TABLE

OPENING TYPE (SUBSTRATE)	FRAME/CLIP/NAIL FIN/HINGE/STRIKE TO OPENING FASTENER TYPE	MINIMUM EMBED	MINIMUM EDGE DIST.	
(4) MIN. 2X6 WOOD FRAME OR BUCK (MIN. GR. 3 & G=0.55)	FRAME/SILL SCREWS			
	NO. 10 SMS OR WOOD SCREW	1 1/4"	3/4"	
	MIN. 18 GA. 33 KSI METAL STUD	NO. 10 GR. 5 SELF TAP/DRILL SCREW	FULL	1/2"
	MIN. 1/8" THK A36 STEEL	NO. 10 GR. 5 SELF TAP/DRILL SCREW	FULL	1/2"
MIN. 1/8" THK 6063-T5 ALUM.	NO. 10 GR. 5 SELF TAP/DRILL SCREW	FULL	1/2"	
	MIN. 1/8" THK 6063-T5 ALUM.	NO. 10 GR. 5 SELF TAP/DRILL SCREW	FULL	1/2"
	C-90 CMU/2500 PSI CONCRETE	(1) 1/4" CONCRETE SCREW	1 1/4"	2"
	(2) INSTALLATION CLIP SCREWS (BENT & 3-PIECE CLIPS)			
(4) MIN. 2X6 WOOD FRAME OR BUCK (MIN. GR. 3 & G=0.55)	NO. 8 X 1 1/2" SMS	1 3/8"	(3) N/A	
	MIN. 1/8" THK A36 STEEL	NO. 8 GR. 5 SELF TAP/DRILL SCREW	FULL	(3) N/A
	MIN. 1/8" THK 6063-T5 ALUM.	NO. 8 GR. 5 SELF TAP/DRILL SCREW	FULL	(3) N/A
	INSTALLATION CLIP SCREWS (STRAIGHT CLIPS)			
MIN. 2X6 WOOD FRAME OR BUCK (MIN. GR. 3 & G=0.55)	NO. 8 X 1 1/2" SMS	1 3/8"	3/4"	
	MIN. 18 GA. 33 KSI METAL STUD	NO. 8 GR. 5 SELF TAP/DRILL SCREW	FULL	1/2"
	MIN. 1/8" THK A36 STEEL	NO. 8 GR. 5 SELF TAP/DRILL SCREW	FULL	1/2"
	MIN. 1/8" THK 6063-T5 ALUM.	NO. 8 GR. 5 SELF TAP/DRILL SCREW	FULL	1/2"
(3) NAILING FIN FASTENERS				
	(4) MIN. 2X6 WOOD FRAME OR BUCK (MIN. GR. 3 & G=0.55)	NO. 8 SMS SCREW	1 3/8"	1/2"
	(4) MIN. 2X6 WOOD FRAME OR BUCK (MIN. GR. 3 & G=0.55)	11 GA. ROOFING NAIL	1 3/8"	1/2"
	MIN. 1/8" THK A36 STEEL	NO. 8 GR. 5 SELF TAP/DRILL SCREW	FULL	1/2"
MIN. 1/8" THK 6063-T5 ALUM.	NO. 8 GR. 5 SELF TAP/DRILL SCREW	FULL	1/2"	
HINGE & STRIKE SCREWS				
(4) MIN. 2X6 WOOD FRAME OR BUCK (MIN. GR. 3 & G=0.55)	NO. 8 SMS OR WOOD SCREW	1 1/4"	3/4"	
MIN. 18 GA. 33 KSI METAL STUD	NO. 8 GR. 5 SELF TAP/DRILL SCREW	FULL	1/2"	
MIN. 1/8" THK A36 STEEL	NO. 8 GR. 5 SELF TAP/DRILL SCREW	FULL	1/2"	
MIN. 1/8" THK 6063-T5 ALUM.	NO. 8 GR. 5 SELF TAP/DRILL SCREW	FULL	1/2"	
C-90 CMU/2500 PSI CONCRETE	(1) 3/16" CONCRETE SCREW	1 1/4"	2"	

EDGE DISTANCE MAY BE DECREASED TO 1/2" IF SCREWS ARE ANGLED 15 TO 20 DEGREES AWAY FROM THE EDGE.

ANCHOR/SUBSTRATE EVALUATION NOTE:
ALL ANCHORS IN THEIR SPECIFIED SUBSTRATES HAVE BEEN ANALYZED IN ACCORDANCE WITH THEIR APPLICABLE STANDARD(S) AND ARE FOUND TO BE CAPABLE OF SUPPORTING ALL LOADS IMPOSED ON THEM UNDER THE GUIDELINES OF THIS DOCUMENT. ANY SUBSTRATES OR CONDITIONS OUTSIDE OF WHAT IS SHOWN HERE-IN SHALL BE SUBJECT TO JOB SPECIFIC ENGINEER'S REVIEW & CERTIFICATION.

INSTALLATION NOTE:
WHEN NECESSARY, INSTALLATION METHODS MAY BE MIXED WITH ANY ONE WINDOW SUCH THAT INDIVIDUAL SIDES OF THE WINDOW MAY USE ONE OR THE OTHER ANCHOR METHOD (EXAMPLE: LEFT SIDE MAY USE FRAME SCREWS METHOD WHILE OTHER SIDES USE FIN)



THESE DRAWINGS ARE APPLICABLE ONLY TO THE PRODUCT SPECIFIED. THEY MAY NOT BE USED FOR THE ASSEMBLY AND/OR INSTALLATION OF ANY OTHER PRODUCT NOR MAY THEY BE USED FOR RATIONAL AND/OR LOCAL APPROVAL OF ANY PRODUCT NOT PRODUCED BY THE MANUFACTURER STATED ON THESE DRAWINGS.

INTERIOR ELEVATION: DOUBLE XX DOOR
SCALE: 1/2" = 1'-0"
(NAIL FIN MOUNT CONDITION)

INTERIOR ELEVATION: SINGLE X DOOR
SCALE: 1/2" = 1'-0"
(NAIL FIN MOUNT CONDITION)

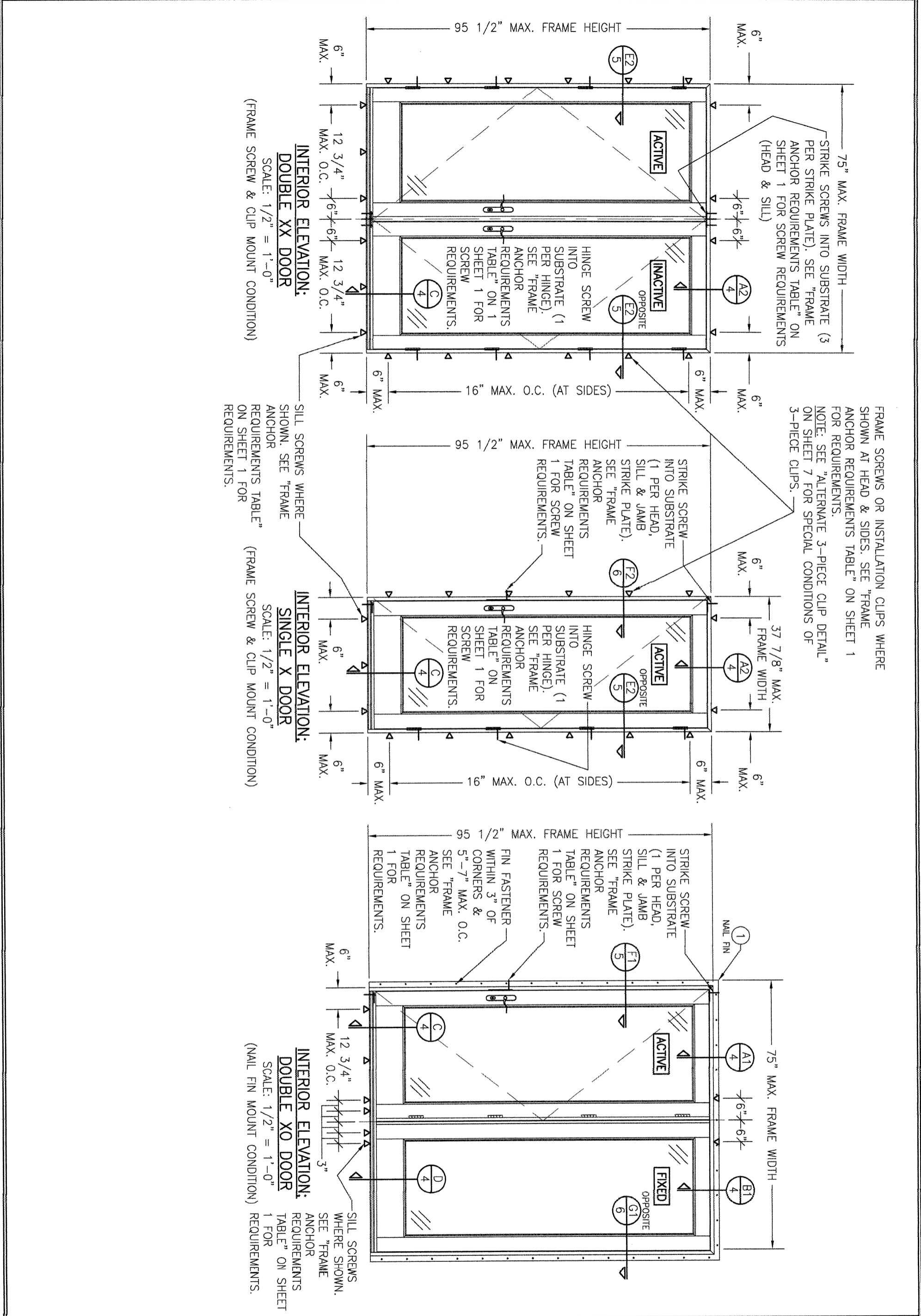
ALLOWABLE DESIGN PRESSURE

("XX", "X", "X0" & "OX" DOORS)	+55/-55 PSF
("O" DOORS)	+55/-70 PSF

HINGE REQUIREMENTS

FRAME HEIGHT	QUANTITY PER PANEL
OVER 83 1/2"	4
83 1/2" AND LESS	3

DRAWING NO. 1853 REV. C	SHEET NO. 1 OF 8	DRAWING TITLE LIFESTYLE WITH HGP SERIES MODEL 2 NON-IMPACT CLAD IN-SWING DOOR	CONSULTANTS W. W. SCHAEFER ENGINEERING & CONSULTING, P.A. 25601 AYSEN DRIVE PUNTA GORDA, FL 33983 PHONE: 561-744-3424	MANUFACTURER PELLA CORPORATION 102 MAIN STREET PELLA, IA 50219	<table border="1"> <tr> <th>NO.</th> <th>REVISION DESCRIPTION</th> <th>BY</th> <th>DATE</th> </tr> <tr> <td>A1</td> <td>UPDATE TO CURRENT STANDARDS</td> <td>W.W.S.</td> <td>11/17/16</td> </tr> <tr> <td>B1</td> <td>UPDATE TO NEW TESTING</td> <td>W.W.S.</td> <td>06/05/23</td> </tr> <tr> <td>C1</td> <td>ADDED NEW CLIP INSTALL OPTION</td> <td>W.W.S.</td> <td>06/19/24</td> </tr> </table>	NO.	REVISION DESCRIPTION	BY	DATE	A1	UPDATE TO CURRENT STANDARDS	W.W.S.	11/17/16	B1	UPDATE TO NEW TESTING	W.W.S.	06/05/23	C1	ADDED NEW CLIP INSTALL OPTION	W.W.S.	06/19/24	DRAWN BY: W.W.M. CHECKED BY: W.W.S.
						NO.	REVISION DESCRIPTION	BY	DATE													
A1	UPDATE TO CURRENT STANDARDS	W.W.S.	11/17/16																			
B1	UPDATE TO NEW TESTING	W.W.S.	06/05/23																			
C1	ADDED NEW CLIP INSTALL OPTION	W.W.S.	06/19/24																			
CERTIFICATION WARREN W. SCHAEFER, P.E. P.E. NO. 44135		DATE: 03/04/13			PLT: 1-24																	




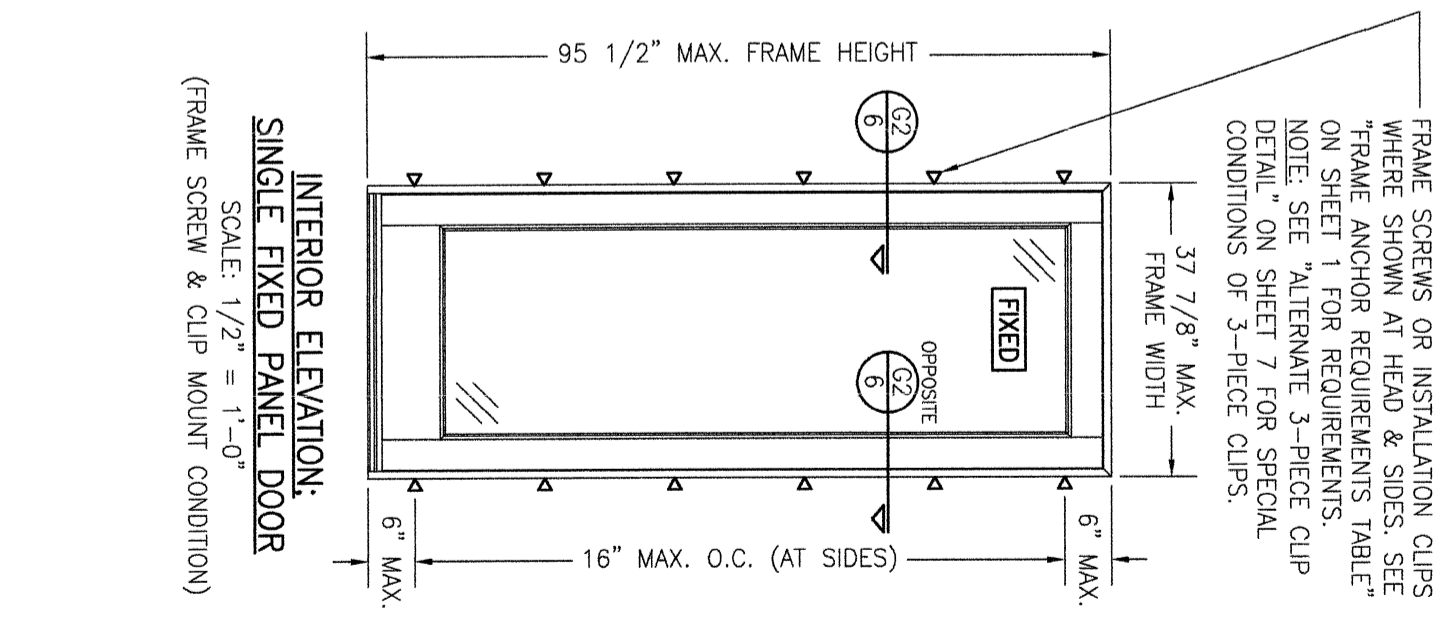
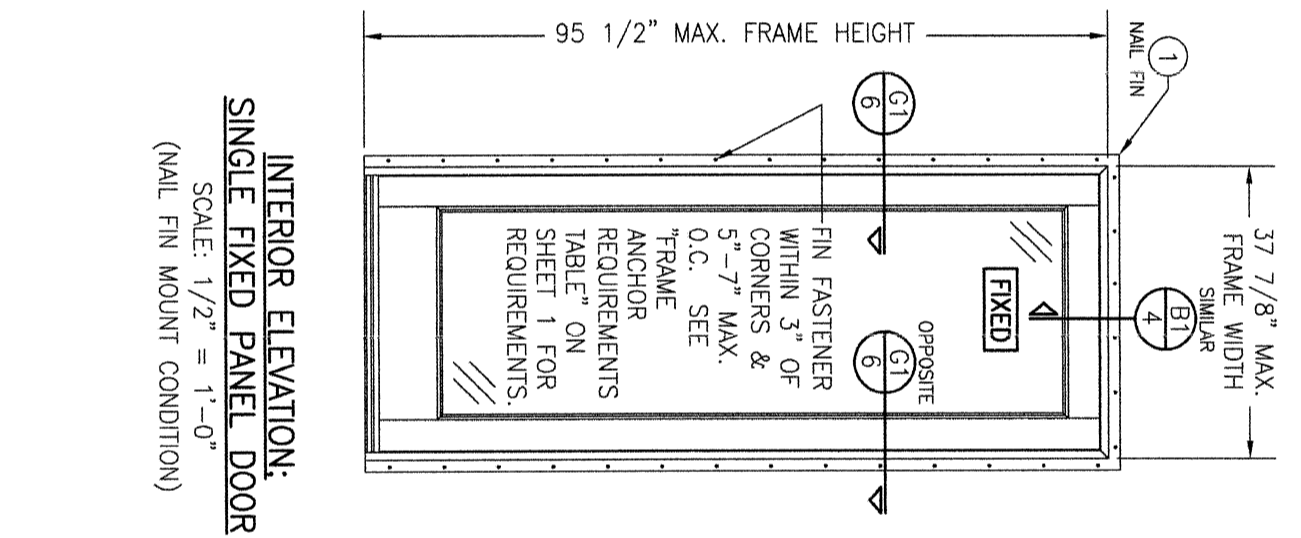
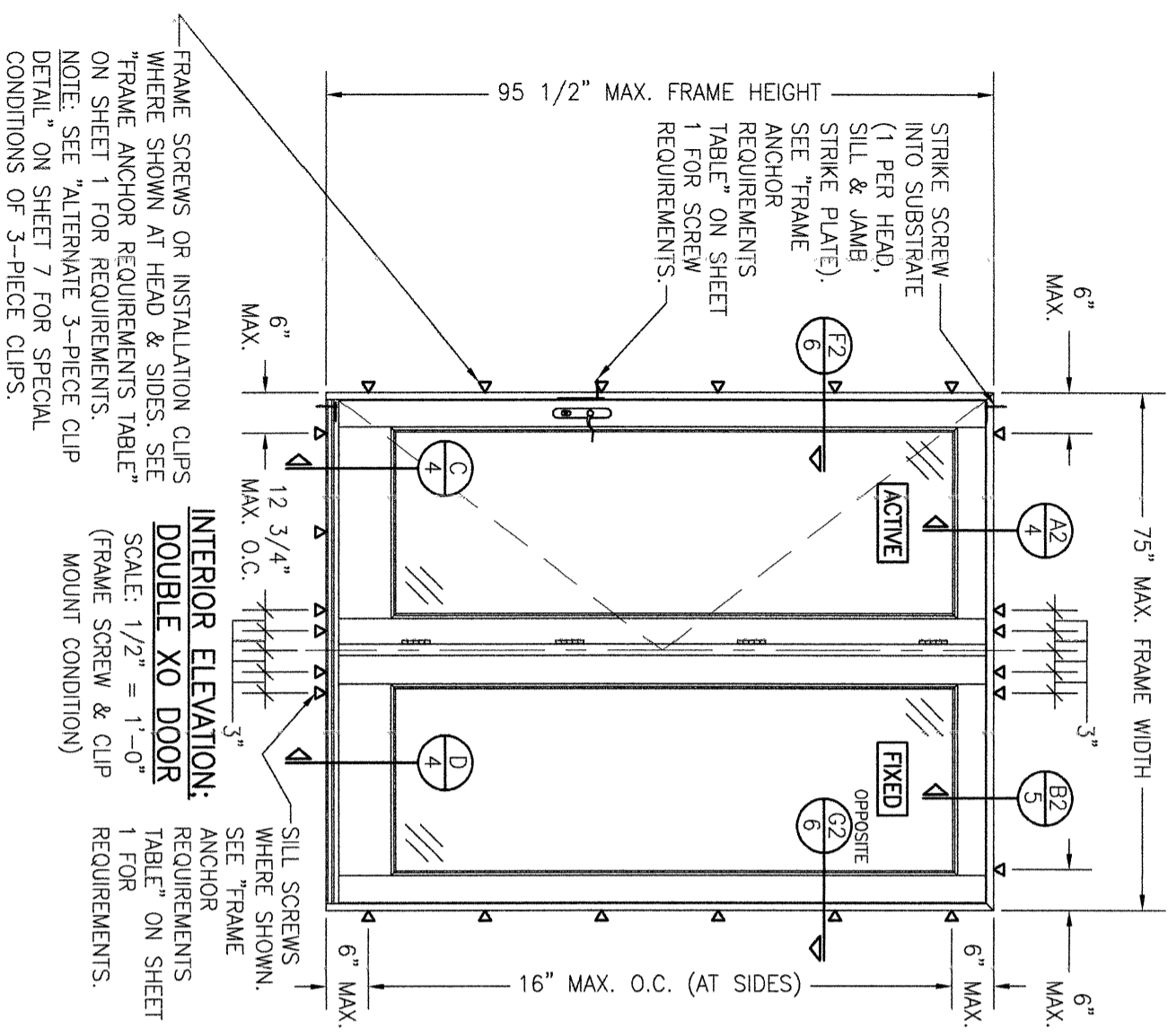
FRAME SCREWS OR INSTALLATION CLIPS WHERE SHOWN AT HEAD & SIDES. SEE "FRAME ANCHOR REQUIREMENTS TABLE" ON SHEET 1 FOR REQUIREMENTS.
 NOTE: SEE "ALTERNATE 3-PIECE CLIP DETAIL" ON SHEET 7 FOR SPECIAL CONDITIONS OF 3-PIECE CLIPS.

**INTERIOR ELEVATION:
DOUBLE XX DOOR**
 SCALE: 1/2" = 1'-0"
 (FRAME SCREW & CLIP MOUNT CONDITION)

**INTERIOR ELEVATION:
SINGLE X DOOR**
 SCALE: 1/2" = 1'-0"
 (FRAME SCREW & CLIP MOUNT CONDITION)

**INTERIOR ELEVATION:
DOUBLE XO DOOR**
 SCALE: 1/2" = 1'-0"
 (NAIL FIN MOUNT CONDITION)

DRAWING TITLE		CONSULTANTS		MANUFACTURER		NO. REVISION DESCRIPTION BY DATE			
LIFESTYLE WITH HGP SERIES MODEL 2 NON-IMPACT CLAD IN-SWING DOOR		W. W. SCHAEFER ENGINEERING & CONSULTING, P.A.		PELLA CORPORATION					
25601 AYSEN DRIVE PUNTA GORDA, FL 33983 PHONE: 561-744-3424		WARREN W. SCHAEFER, P.E. P.E. NO. 44135		 102 MAIN STREET PELLA, IA 50219 641-621-1000					
DRAWING NO. 1853		SHEET NO. 2 OF 8		DATE: 03/04/13					



FRAME SCREWS OR INSTALLATION CLIPS WHERE SHOWN AT HEAD & SIDES. SEE "FRAME ANCHOR REQUIREMENTS TABLE" ON SHEET 1 FOR REQUIREMENTS.

NOTE: SEE "ALTERNATE 3-PIECE CLIP DETAIL" ON SHEET 7 FOR SPECIAL CONDITIONS OF 3-PIECE CLIPS.

INTERIOR ELEVATION: SINGLE FIXED PANEL DOOR
 SCALE: 1/2" = 1'-0"
 (NAIL FIN MOUNT CONDITION)

INTERIOR ELEVATION: SINGLE FIXED PANEL DOOR
 SCALE: 1/2" = 1'-0"
 (FRAME SCREW & CLIP MOUNT CONDITION)

NO.	REVISION DESCRIPTION	BY	DATE

DRAWING TITLE
 LIFESTYLE WITH HGP SERIES MODEL 2 NON-IMPACT CLAD IN-SWING DOOR

CONSULTANTS
 W. W. SCHAEFER ENGINEERING & CONSULTING, P.A.
 25601 AYSEN DRIVE
 PUNTA GORDA, FL 33983
 PHONE: 561-744-3424

MANUFACTURER
 PELLA CORPORATION
 102 MAIN STREET
 PELLA, IA 50219
 641-621-1000

CERTIFICATION
 WARREN W. SCHAEFER, P.E.
 P.E. NO. 44135

DRAWING NO.
 1853

REV.
 C

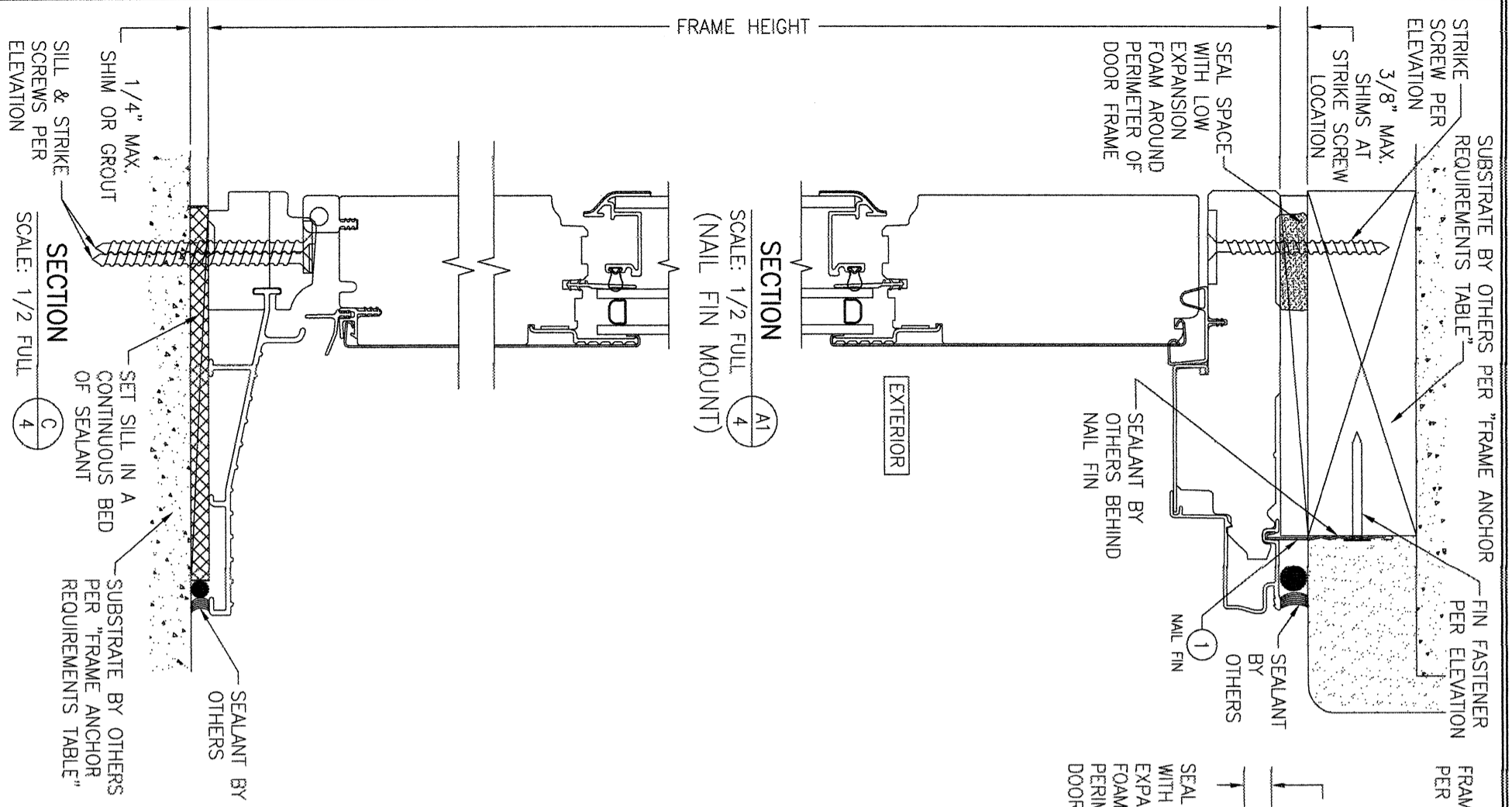
SHEET NO.
 3 OF 8

DRAWN BY:
 W.R.M.

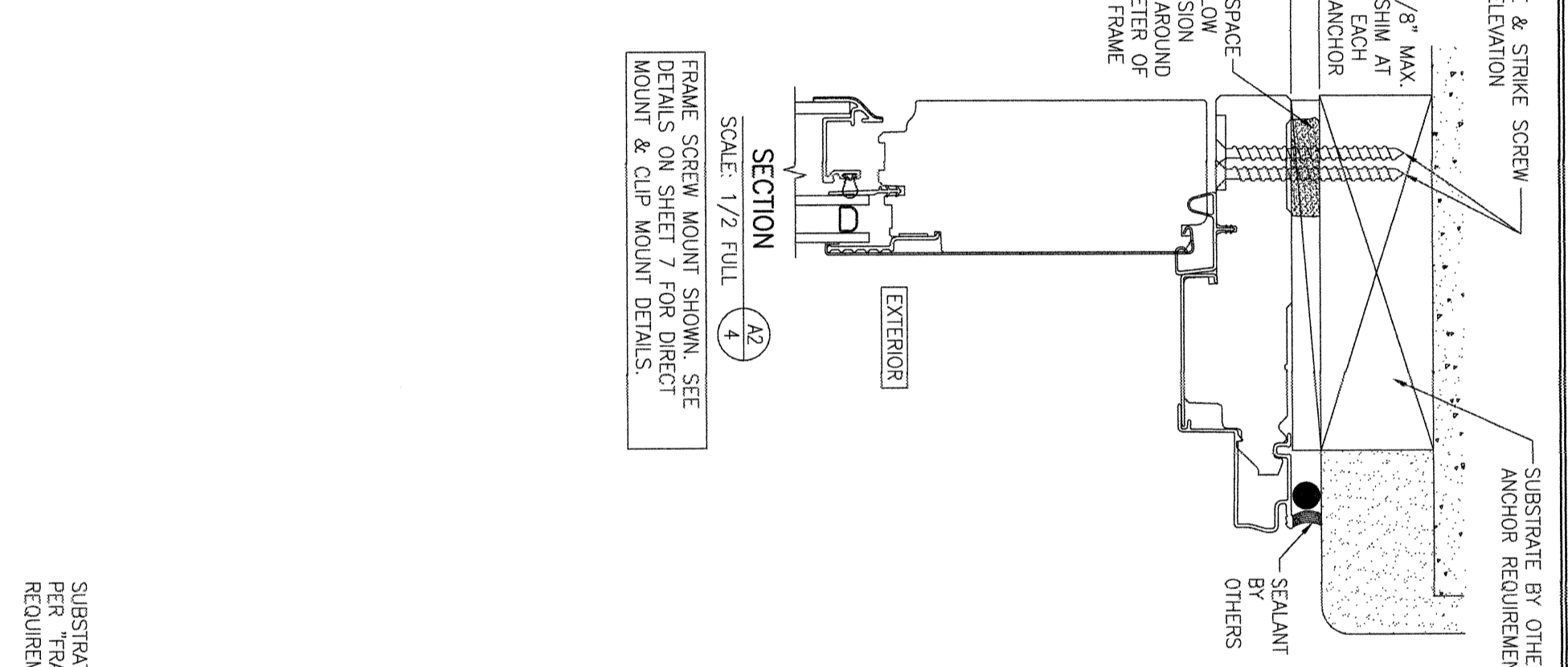
CHECKED BY:
 W.M.S.

DATE:
 03/04/13

PLOT:
 1-24

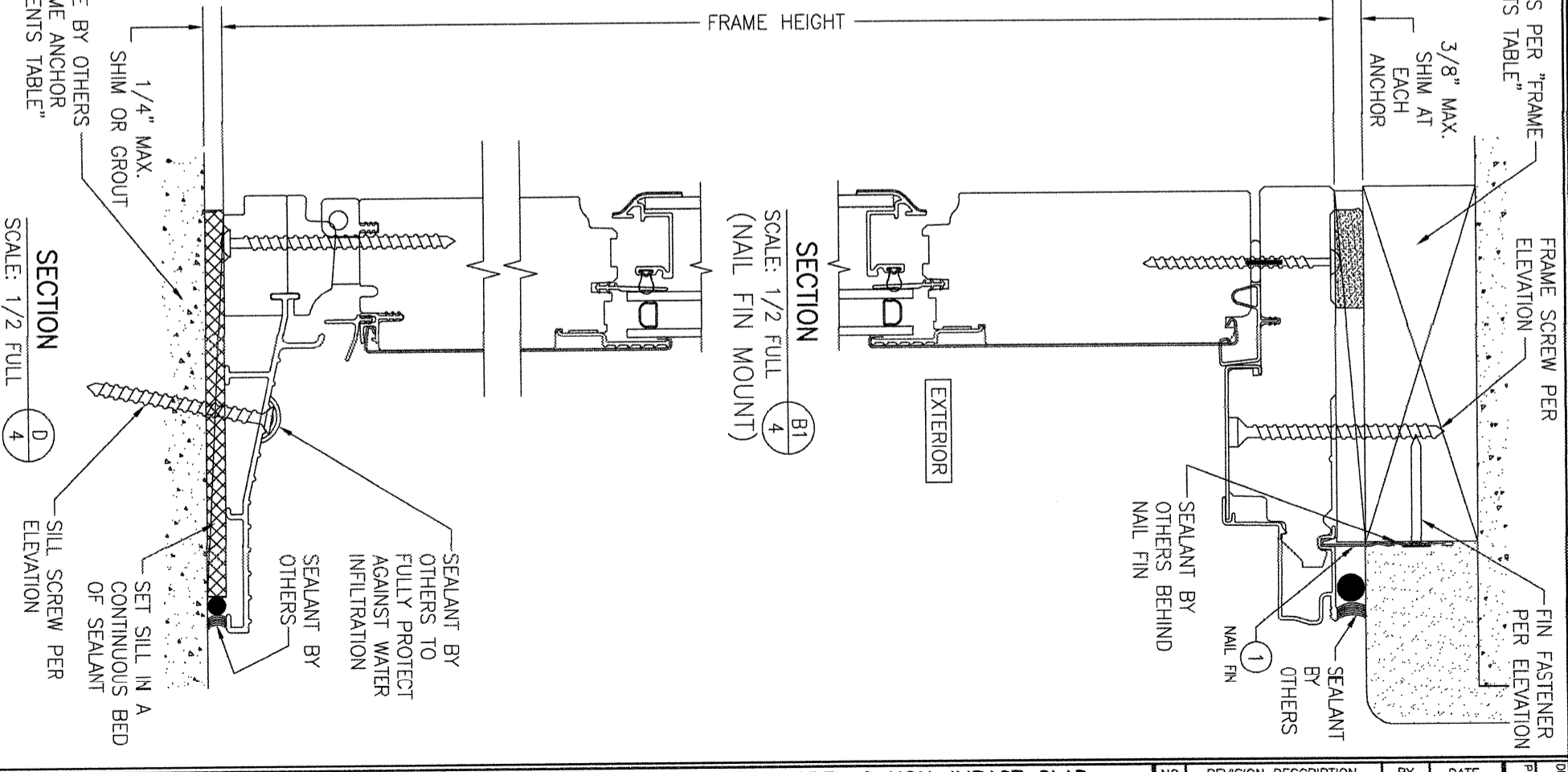


SECTION A1
SCALE: 1/2 FULL
(NAIL FIN MOUNT)



SECTION A2
SCALE: 1/2 FULL
(FRAME SCREW MOUNT)

FRAME SCREW MOUNT SHOWN. SEE DETAILS ON SHEET 7 FOR DIRECT MOUNT & CLIP MOUNT DETAILS.



SECTION B1
SCALE: 1/2 FULL
(SILL SCREW MOUNT)

<p>CERTIFICATION</p> <p>WARREN W. SCHAEFER, P.E. P.E. NO. 44135</p>	<p>DRAWING TITLE: LIFESTYLE WITH HGP SERIES MODEL 2 NON-IMPACT CLAD IN-SWING DOOR</p> <p>CONSULTANTS: W. W. SCHAEFER ENGINEERING & CONSULTING, P.A. 26376 NADIR ROAD; UNIT 309 PUNTA GORDA, FL 33983 PHONE: 561-744-3424</p>	<p>MANUFACTURER: PELLA CORPORATION</p> <p>102 MAIN STREET PELLA, IA 50219 641-621-1000</p>	<table border="1" style="width: 100%; border-collapse: collapse;"> <thead> <tr> <th>NO.</th> <th>REVISION DESCRIPTION</th> <th>BY</th> <th>DATE</th> </tr> </thead> <tbody> <tr> <td> </td> <td> </td> <td> </td> <td> </td> </tr> <tr> <td> </td> <td> </td> <td> </td> <td> </td> </tr> <tr> <td> </td> <td> </td> <td> </td> <td> </td> </tr> </tbody> </table>	NO.	REVISION DESCRIPTION	BY	DATE												
NO.	REVISION DESCRIPTION	BY	DATE																

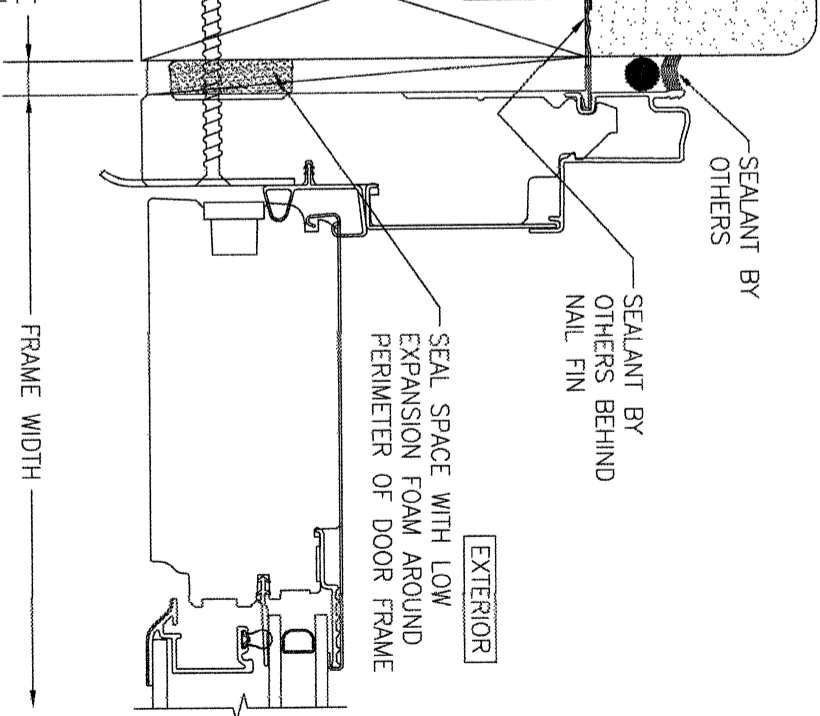
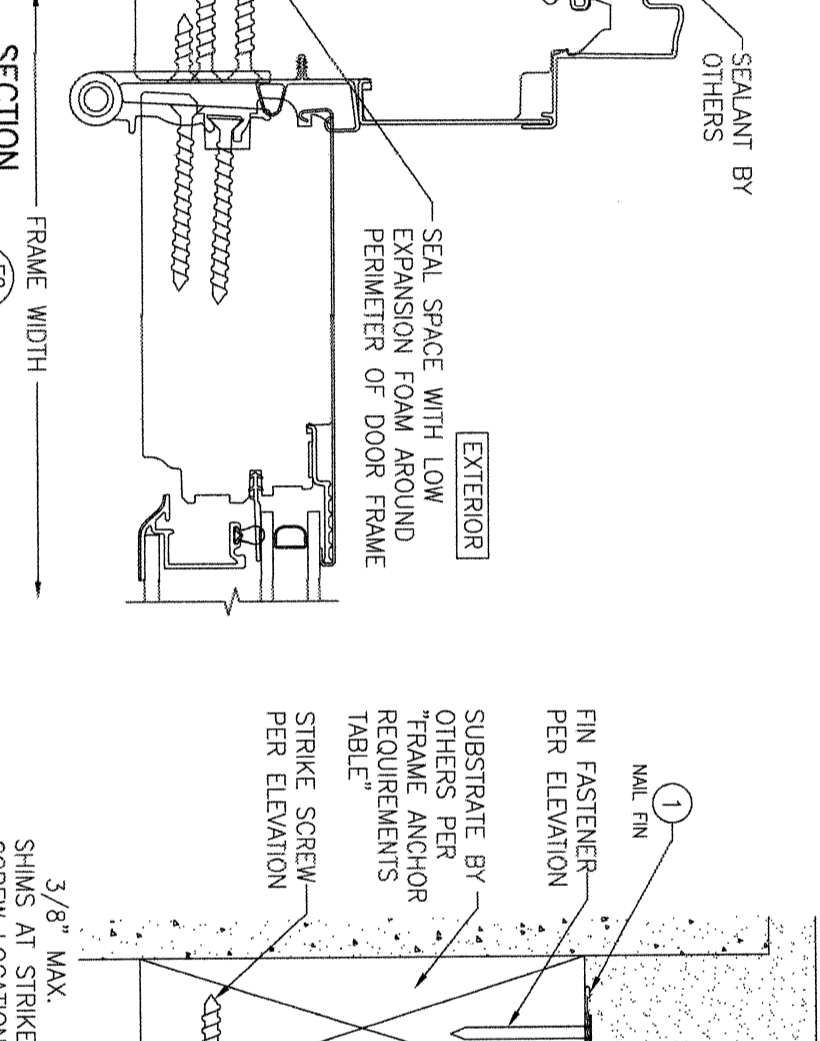
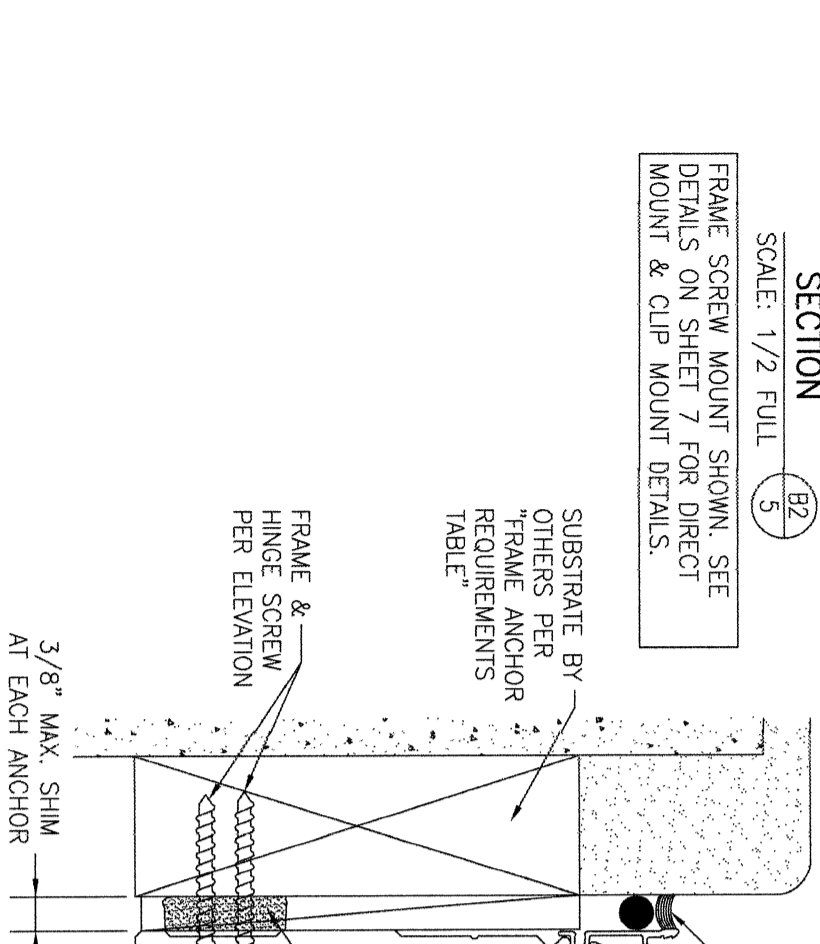
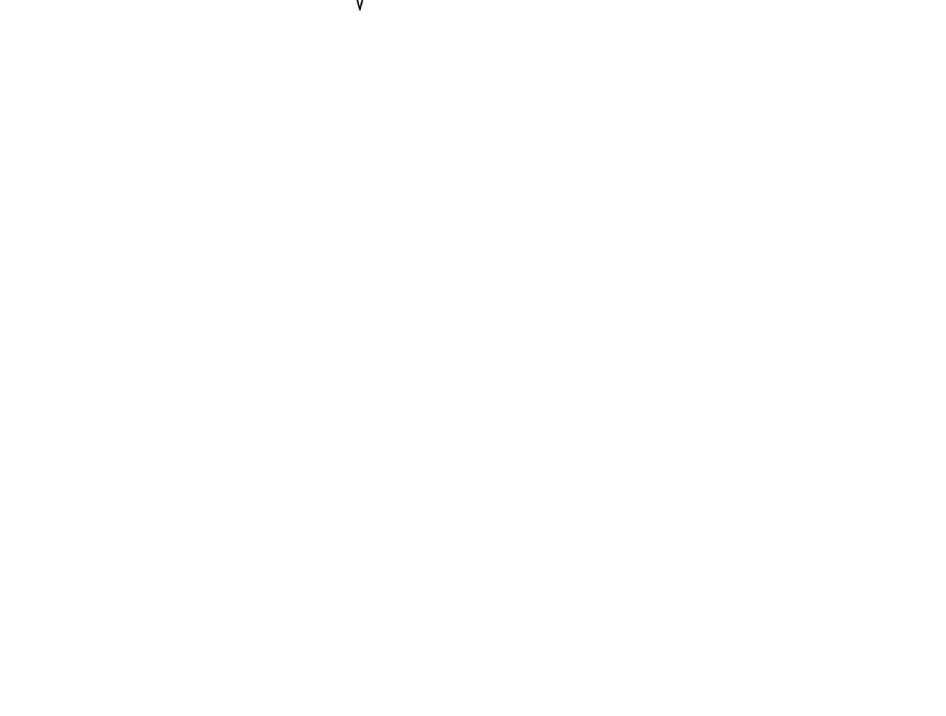
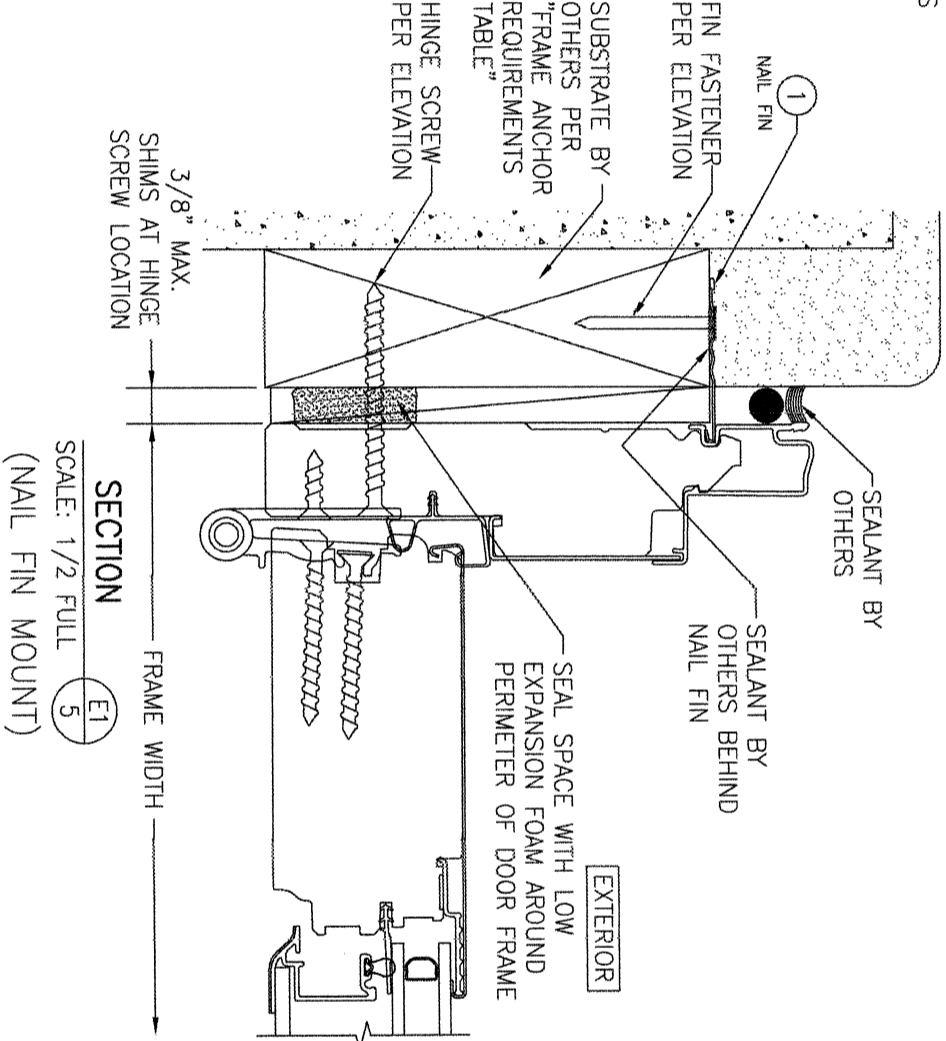
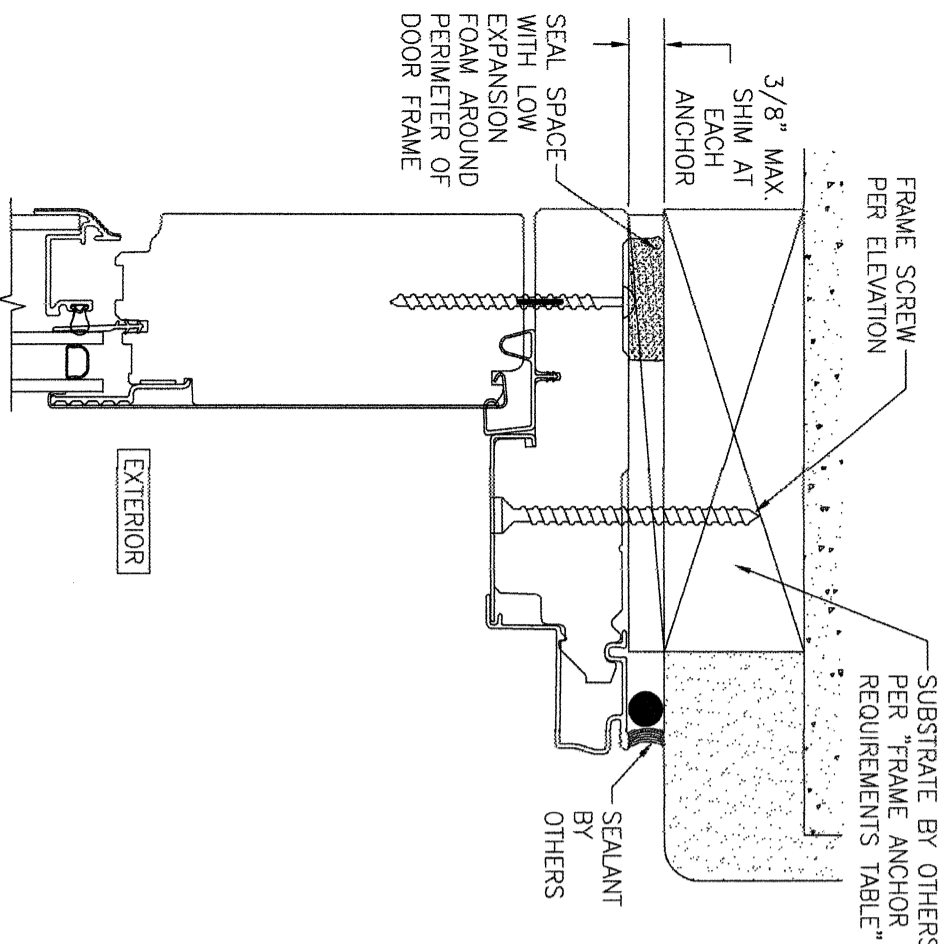
DRAWING NO. 1853

SHEET NO. 4 OF 8

REV. C

DATE: 03/04/13

CHECKED BY: W.W.S.



FRAME SCREW MOUNT SHOWN. SEE DETAILS ON SHEET 7 FOR DIRECT MOUNT & CLIP MOUNT DETAILS.

FRAME SCREW MOUNT SHOWN. SEE DETAILS ON SHEET 7 FOR DIRECT MOUNT & CLIP MOUNT DETAILS.

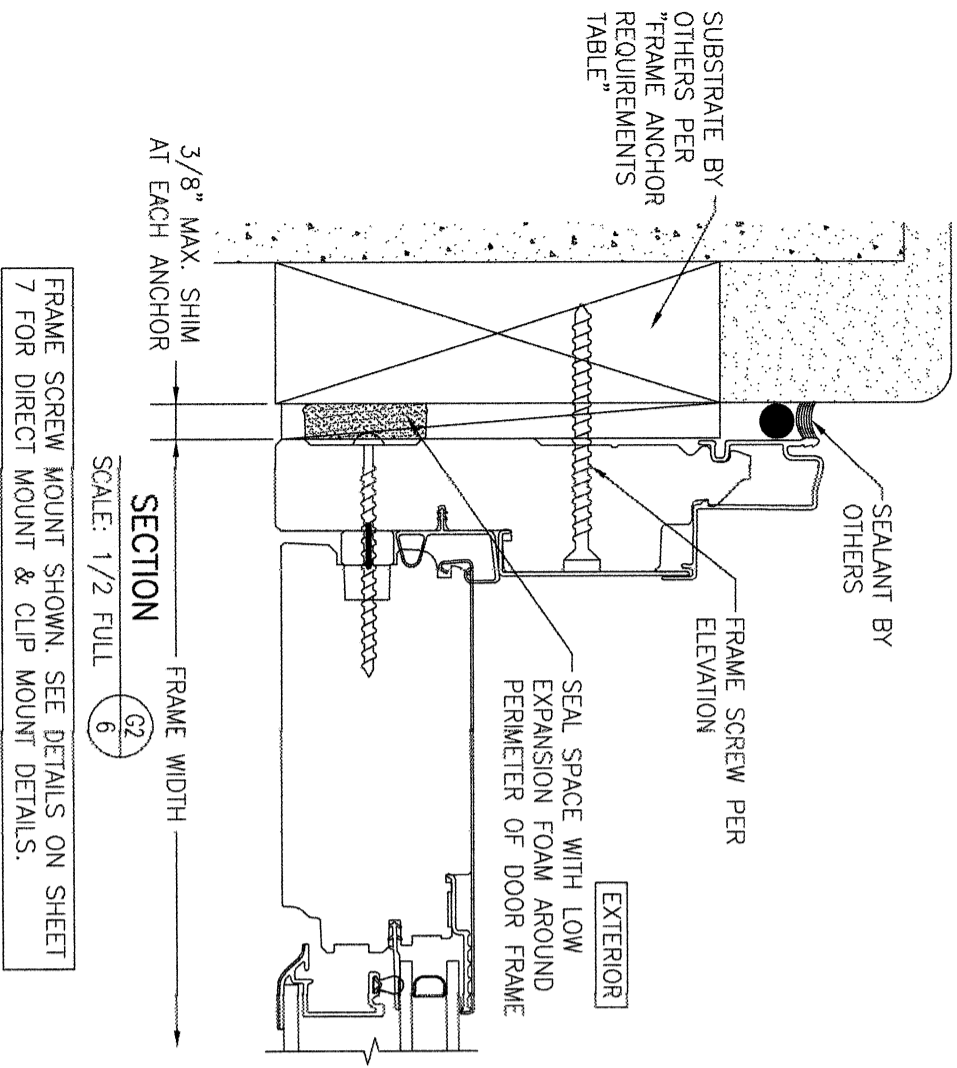
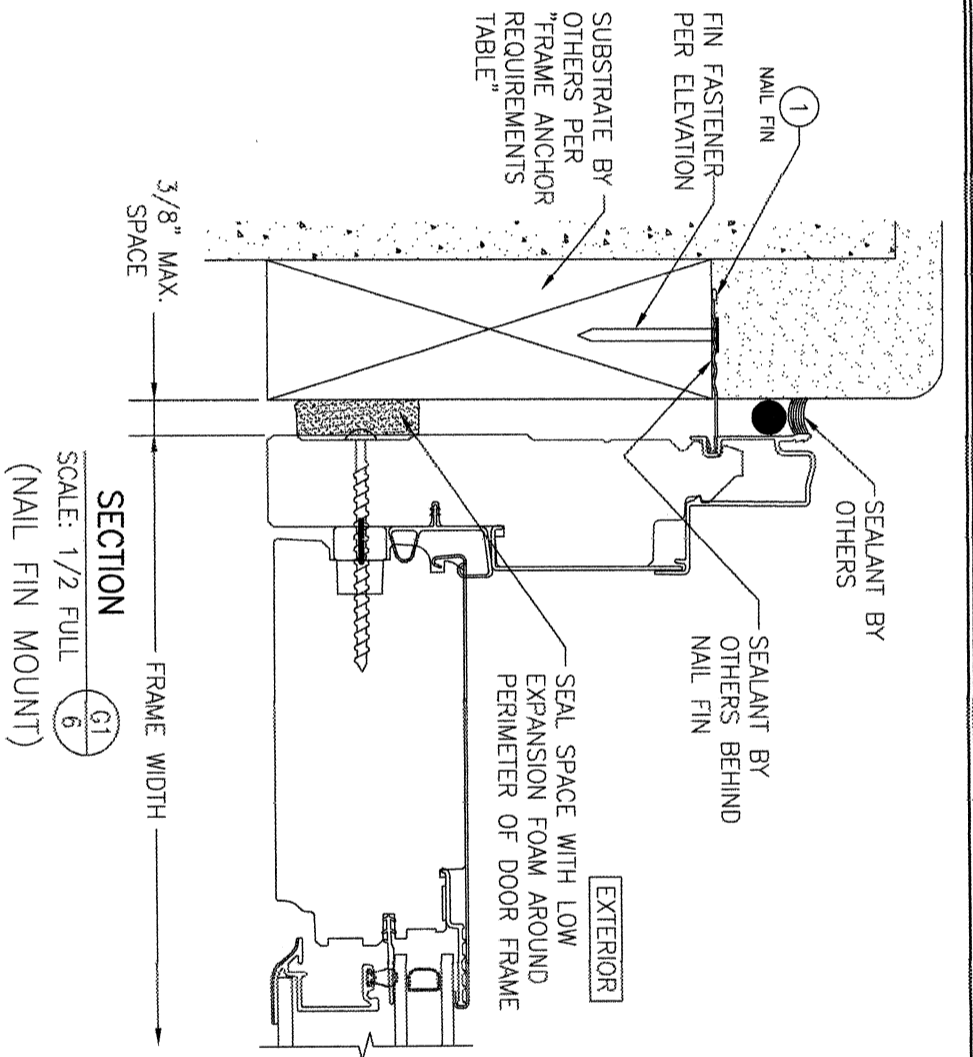
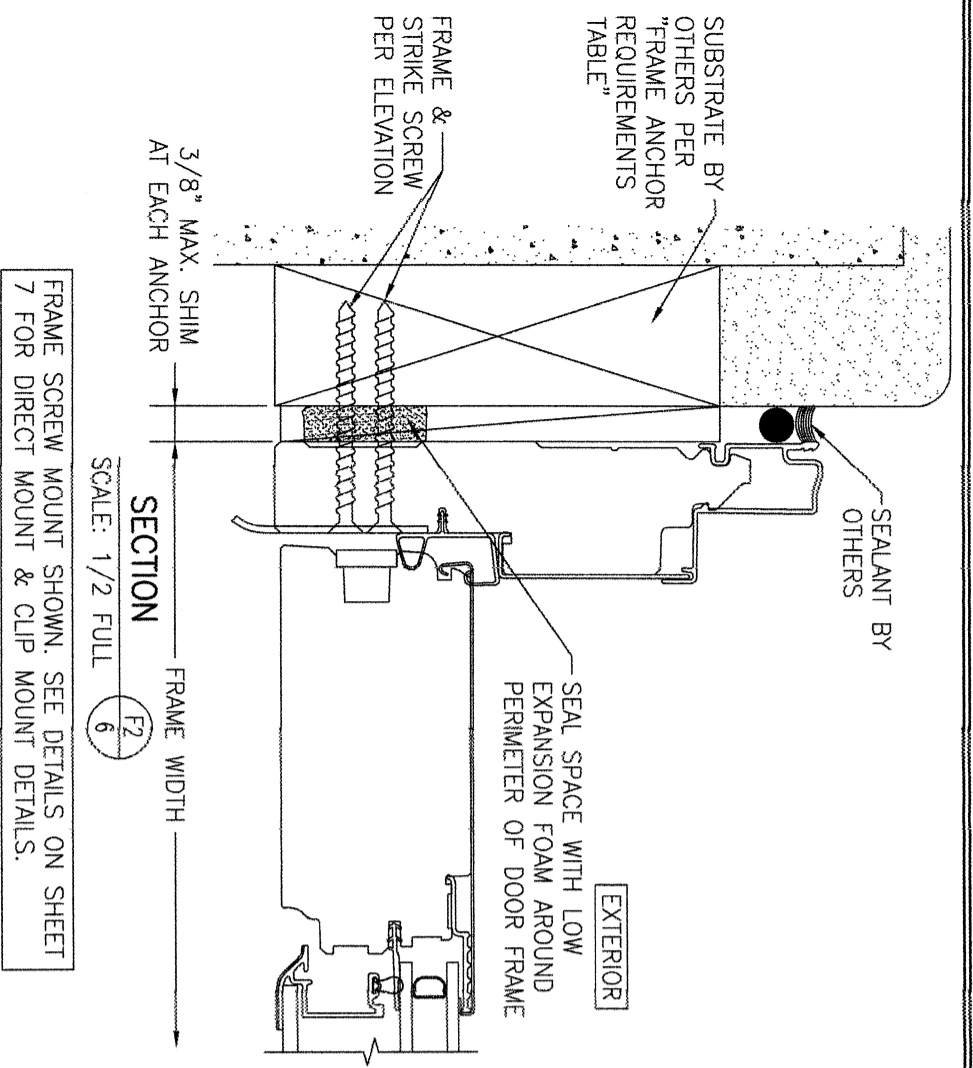
NO.	REVISION DESCRIPTION	BY	DATE
1-2			03/04/13

MANUFACTURER
PELLA CORPORATION
 102 MAIN STREET
 PELLA, IA 50219
 641-621-1000

CONSULTANTS
W. W. SCHAEFER ENGINEERING & CONSULTING, P.A.
 26376 NADIR ROAD, UNIT 309
 PUNTA GORDA, FL 33983
 PHONE: 561-744-3424

CERTIFICATION
 WARREN W. SCHAEFER, P.E.
 P.E. NO. 44135

DRAWING NO. 1853
 REV. C
 SHEET NO. 5 OF 8



NO.	REVISION DESCRIPTION	BY	DATE
1-2			

DRAWN BY: W.R.M. CHECKED BY: W.M.S.
 DATE: 03/04/13

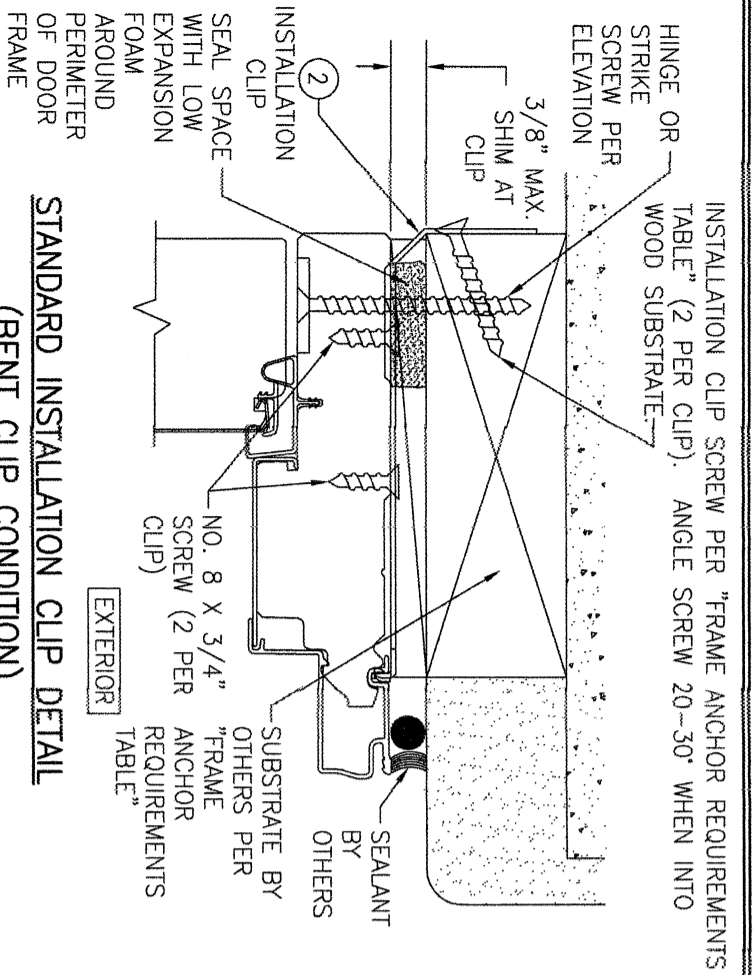
CONSULTANTS
W. W. SCHAEFER ENGINEERING & CONSULTING, P.A.
 26376 NADIR ROAD; UNIT 309
 PUNTA GORDA, FL 33983
 PHONE: 561-744-3424

MANUFACTURER
Pella
PELLA CORPORATION
 102 MAIN STREET
 PELLA, IA 50219
 641-621-1000

DRAWING TITLE
LIFESTYLE WITH HGP SERIES MODEL 2 NON-IMPACT CLAD IN-SWING DOOR

CERTIFICATION
 WARREN W. SCHAEFER, P.E.
 P.E. NO. 44135

DRAWING NO. 1853
 REV. C
 SHEET NO. 6 OF 8



INSTALLATION CLIP SCREW PER "FRAME ANCHOR REQUIREMENTS TABLE" (2 PER CLIP). ANGLE SCREW 20-30° WHEN INTO HINGE OR STRIKE SCREW PER ELEVATION

3/8" MAX. SHIM AT CLIP

INSTALLATION CLIP

SEAL SPACE WITH LOW EXPANSION FOAM AROUND PERIMETER OF DOOR FRAME

SEALANT BY OTHERS

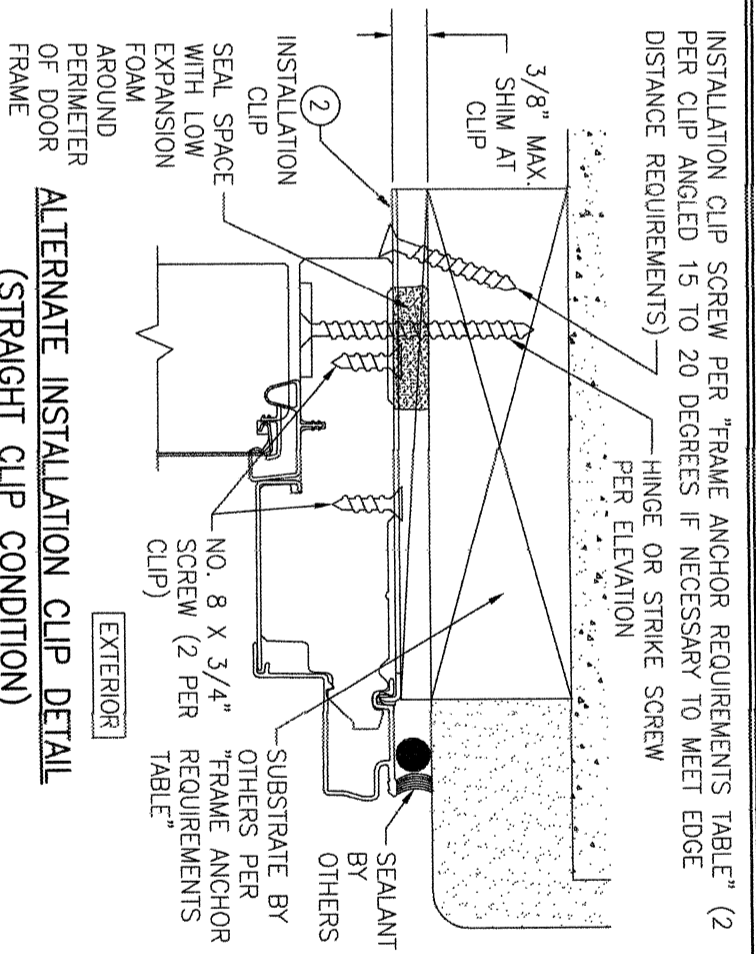
SUBSTRATE BY OTHERS PER "FRAME ANCHOR REQUIREMENTS TABLE"

NO. 8 X 3/4" SCREW (2 PER "FRAME ANCHOR REQUIREMENTS TABLE")

EXTERIOR

STANDARD INSTALLATION CLIP DETAIL
(BENT CLIP CONDITION)

(HEAD SECTION SHOWN; SIDES ARE INSTALLED THE SAME)
(FOR DETAIL NOT SHOWN, SEE OTHER SECTIONS)
(OPERABLE DOOR SHOWN, FIXED PANEL DOORS ALSO APPLY)
(INSTALLATION CLIPS ARE NOT APPLICABLE AT SILL)



INSTALLATION CLIP SCREW PER "FRAME ANCHOR REQUIREMENTS TABLE" (2 PER CLIP ANGLED 15 TO 20 DEGREES IF NECESSARY TO MEET EDGE DISTANCE REQUIREMENTS)

HINGE OR STRIKE SCREW PER ELEVATION

3/8" MAX. SHIM AT CLIP

INSTALLATION CLIP

SEAL SPACE WITH LOW EXPANSION FOAM AROUND PERIMETER OF DOOR FRAME

SEALANT BY OTHERS

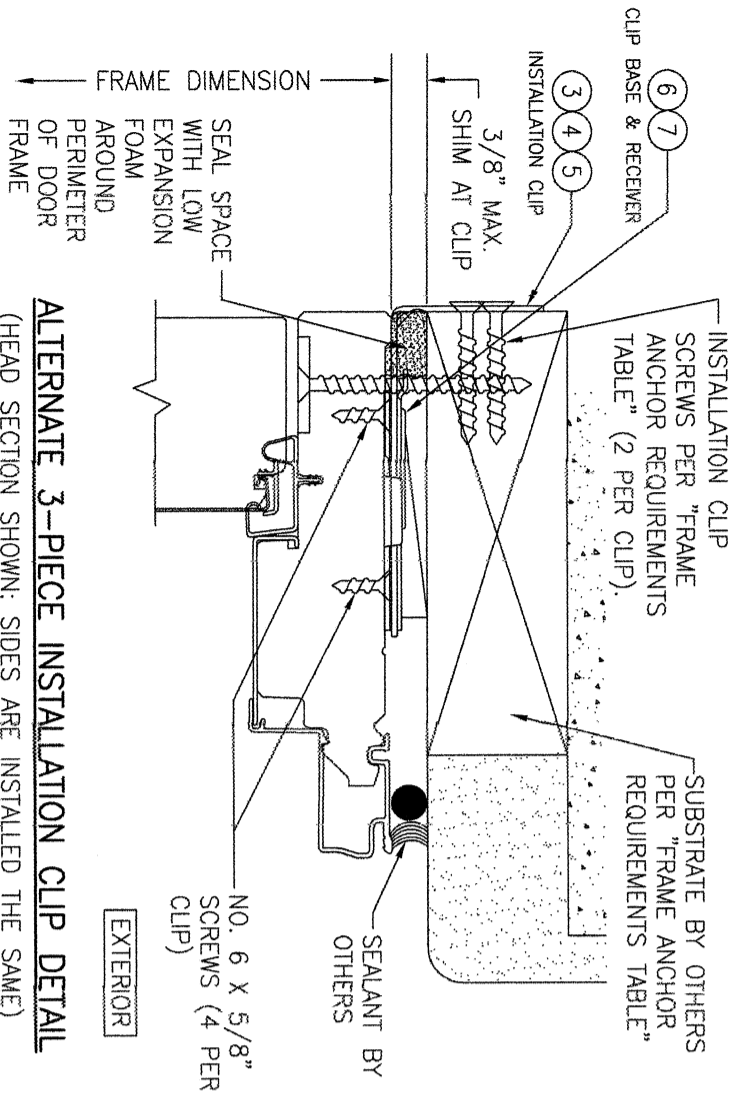
SUBSTRATE BY OTHERS PER "FRAME ANCHOR REQUIREMENTS TABLE"

NO. 8 X 3/4" SCREW (2 PER "FRAME ANCHOR REQUIREMENTS TABLE")

EXTERIOR

ALTERNATE INSTALLATION CLIP DETAIL
(STRAIGHT CLIP CONDITION)

(HEAD SECTION SHOWN; SIDES ARE INSTALLED THE SAME)
(FOR DETAIL NOT SHOWN, SEE OTHER SECTIONS)
(OPERABLE DOOR SHOWN, FIXED PANEL DOORS ALSO APPLY)
(INSTALLATION CLIPS ARE NOT APPLICABLE AT SILL)



CLIP BASE & RECEIVER

INSTALLATION CLIP

3/8" MAX. SHIM AT CLIP

SEAL SPACE WITH LOW EXPANSION FOAM AROUND PERIMETER OF DOOR FRAME

INSTALLATION CLIP

SCREWS PER "FRAME ANCHOR REQUIREMENTS TABLE" (2 PER CLIP)

SUBSTRATE BY OTHERS PER "FRAME ANCHOR REQUIREMENTS TABLE"

SEALANT BY OTHERS

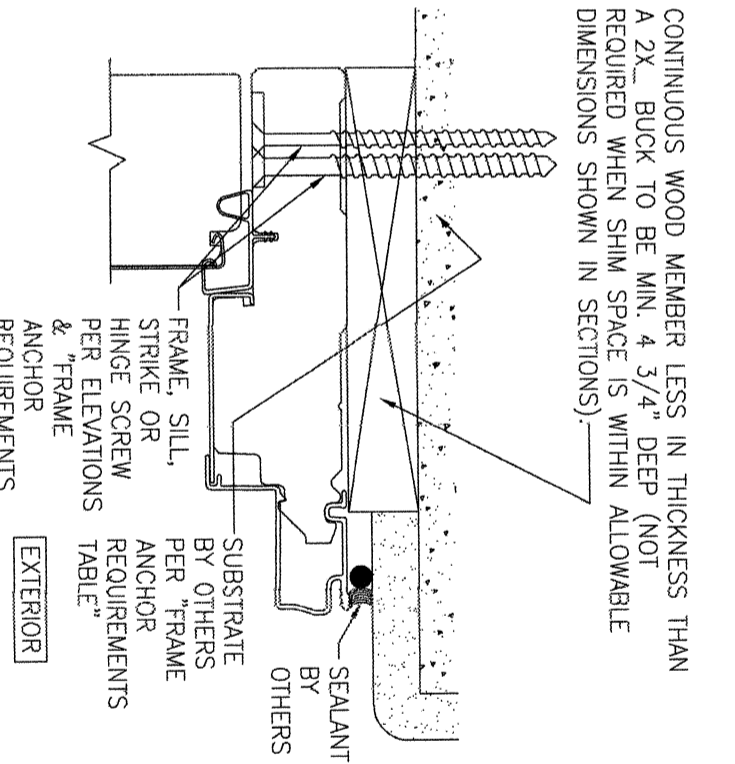
NO. 6 X 5/8" SCREWS (4 PER CLIP)

EXTERIOR

ALTERNATE 3-PIECE INSTALLATION CLIP DETAIL

(HEAD SECTION SHOWN; SIDES ARE INSTALLED THE SAME)
(FOR DETAIL NOT SHOWN, SEE OTHER SECTIONS)
(OPERABLE DOOR SHOWN, FIXED PANEL DOORS ALSO APPLY)
(INSTALLATION CLIPS ARE NOT APPLICABLE AT SILL)

NOTE: 3-PIECE CLIPS MAY ACT AS SPOT OR FULL REPLACEMENTS OF EITHER THE FRAME SCREWS, STANDARD BENT CLIPS OR STRAIGHT CLIPS. THEREFORE, ANY ONE OR ALL OF THE FRAME SCREWS/CLIPS SPECIFIED IN THE ELEVATION(S) MAY BE REPLACED WITH 3-PIECE CLIPS.



CONTINUOUS WOOD MEMBER LESS IN THICKNESS THAN A 2X, BUCK TO BE MIN. 4 3/4" DEEP (NOT REQUIRED WHEN SHIM SPACE IS WITHIN ALLOWABLE DIMENSIONS SHOWN IN SECTIONS)

SEALANT BY OTHERS

SUBSTRATE BY OTHERS PER "FRAME ANCHOR REQUIREMENTS TABLE"

FRAME, SILL, STRIKE OR HINGE SCREW PER ELEVATIONS & "FRAME ANCHOR REQUIREMENTS TABLE"

EXTERIOR

OPTIONAL DIRECT MOUNT DETAIL
TO SUBSTRATE WITH SPACER

(HEAD SECTION SHOWN; SILL & SIDES ARE INSTALLED THE SAME)
(FOR DETAIL NOT SHOWN, SEE OTHER SECTIONS)
(OPERABLE DOOR SHOWN, FIXED PANEL DOORS ALSO APPLY)

NO.	REVISION DESCRIPTION	BY	DATE

DRAWING TITLE: LIFESTYLE WITH HGP SERIES MODEL 2 NON-IMPACT CLAD IN-SWING DOOR

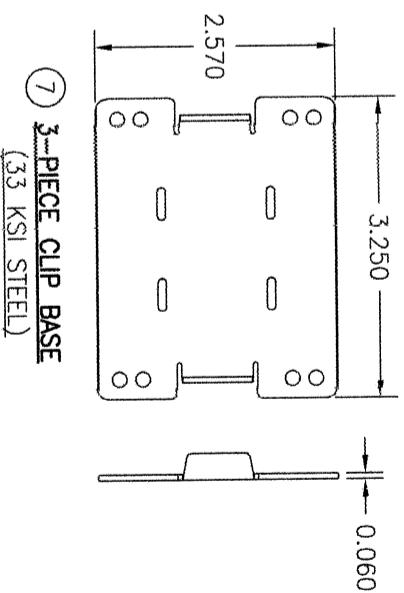
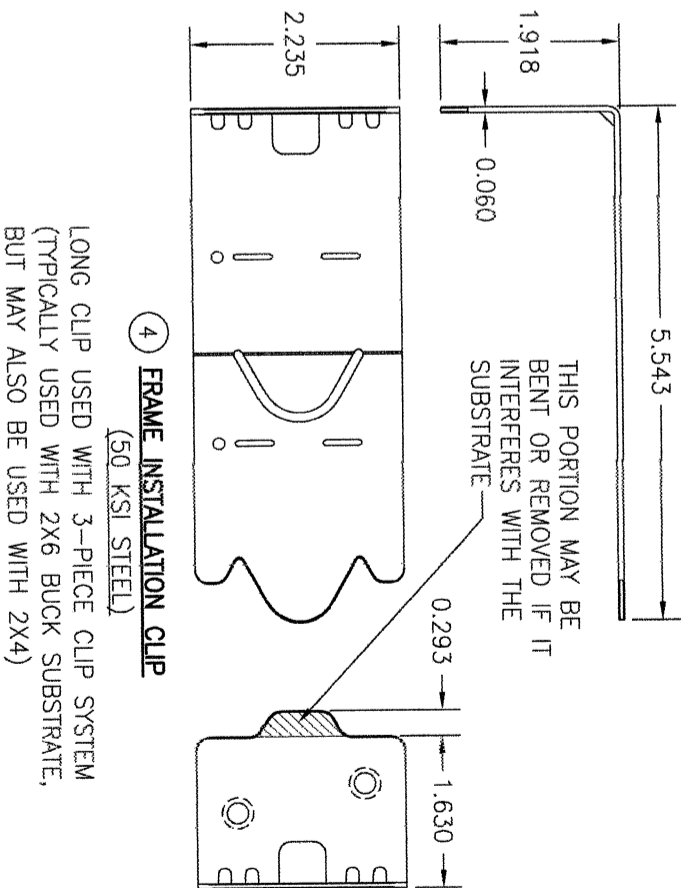
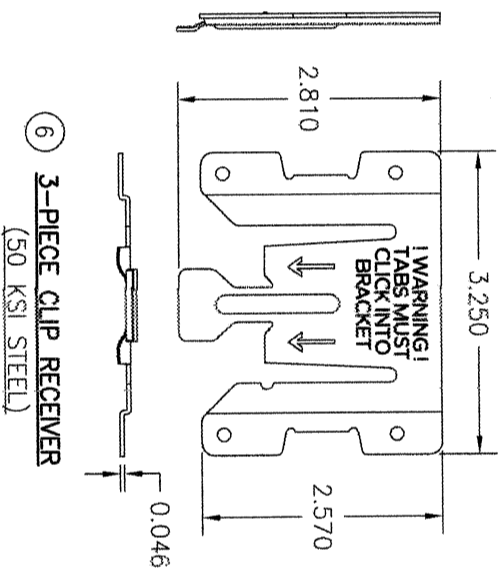
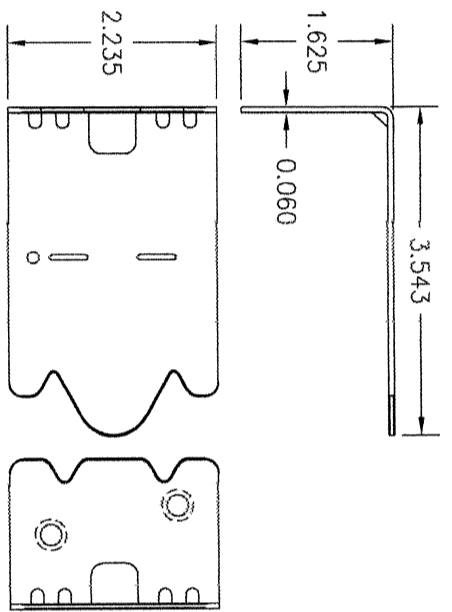
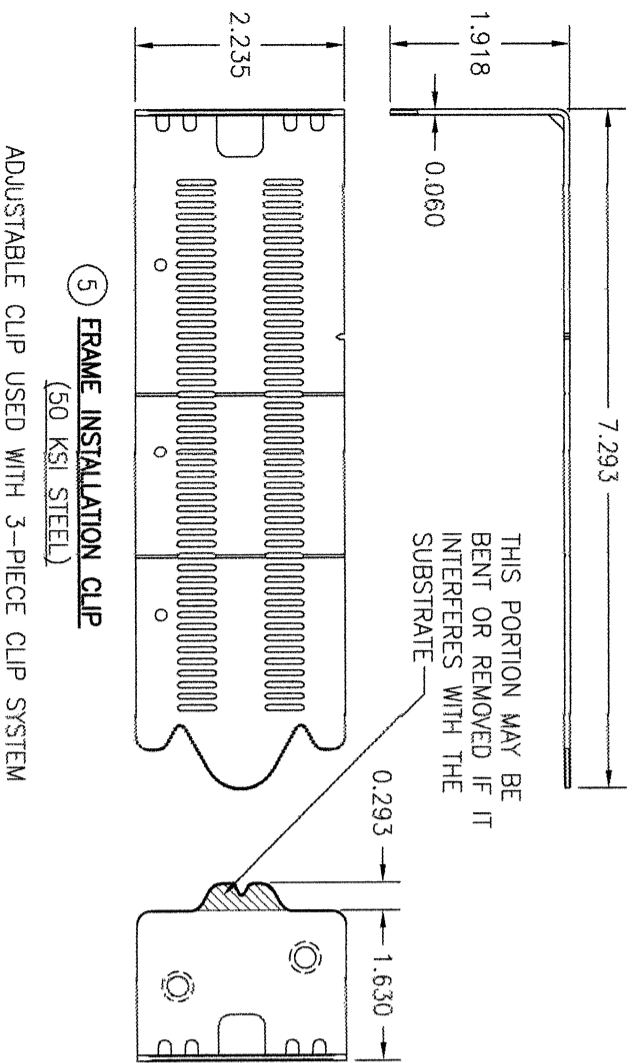
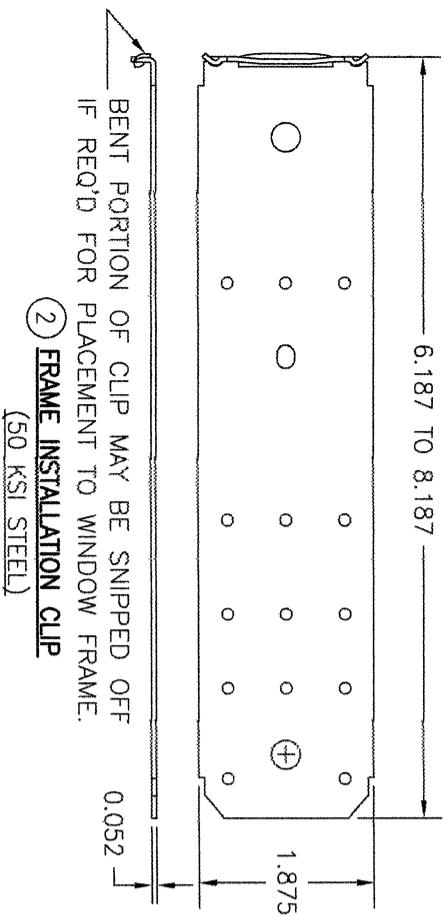
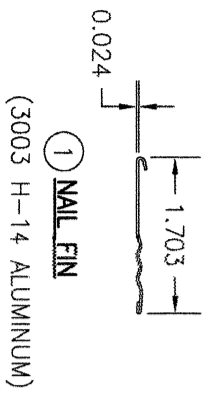
CONSULTANTS: W. W. SCHAEFER ENGINEERING & CONSULTING, P.A.
26376 NADIR ROAD, UNIT 309
PUNTA GORDA, FL 33983
PHONE: 561-744-3424

MANUFACTURER: PELLA CORPORATION
102 MAIN STREET
PELLA, IA 50219
641-621-1000

CERTIFICATION: WARREN W. SCHAEFER, P.E.
P.E. NO. 44135

DRAWING NO. 1853
REV. C

SHEET NO. 7 OF 8



NO.	REVISION DESCRIPTION	BY	DATE

DRAWN BY: W.R.M.
CHECKED BY: W.M.S.
PLOT: 1=2
DATE: 03/04/13

DRAWING TITLE: LIFESTYLE WITH HGP SERIES MODEL 2 NON-IMPACT CLAD IN-SWING DOOR

CONSULTANTS: W. W. SCHAEFER ENGINEERING & CONSULTING, P.A.
26376 NADIR ROAD; UNIT 309
PUNTA GORDA, FL 33983
PHONE: 561-744-3424

MANUFACTURER: PELLA CORPORATION
102 MAIN STREET
PELLA, IA 50219
641-621-1000

CERTIFICATION: WARREN W. SCHAEFER, P.E.
P.E. NO. 44135

DRAWING NO.: 1853
REV.: C
SHEET NO.: 8 OF 8